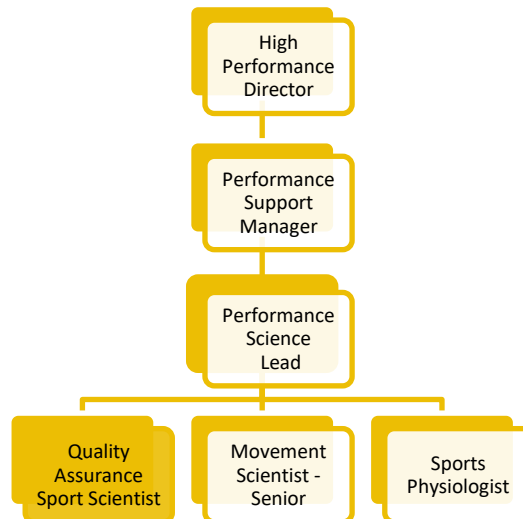


## POSITION DESCRIPTION

POSITION TITLE	Quality Assurance Sport Scientist
APPROVAL DATE	March 2025



### ABOUT WAIS

The Western Australian Institute of Sport (WAIS) was established in 1984 to enable Western Australian athletes to achieve international sporting success. WAIS operates in partnership with National Sporting Organisations and State Sporting Associations, the Department of Local Government Sport, and Cultural Industries and VenuesWest to deliver high performance daily training environments for sports and athletes in support of the National High Performance Sport Strategy outcomes.

Our purpose is to enable Western Australian athletes to achieve international sporting success and our vision is to have Western Australian sporting champions creating community pride and inspiring the next generation.

We do not support a win at all costs culture – success for us is about **winning well**. We are about our people and creating a culture of excellence, teamwork and respect. From athletes to support staff, everyone at WAIS plays a critical role in our success.

### OUR VALUES

Passion	Quality	Integrity	Teamwork
---------	---------	-----------	----------

### POSITION PURPOSE

The Quality Assurance Sport Scientist supports the Performance Science Lead in delivering WAIS quality assurance practice objectives aligned to the AIS National Quality Standards Scheme. This will include developing and delivering key quality assurance projects to support the WAIS high performance sport system to maintain best practice within performance support.

KEY RESPONSIBILITY AREAS (KRAs)	
KRA 1	Delivery of AIS National Quality Assurance Standards Scheme
KRA 2	Teamwork
KRA 3	Quality Assurance Delivery Standards.
KRA 4	Safety and Policy Implementation
KRA 5	Continuous Improvement
KRA 6	Other Duties

KEY RESPONSIBILITY AREAS (KRAs)	
<b>1</b>	<b>Delivery of AIS National Quality Assurance Standards Scheme</b>
1.1	Drive the implementation and management of WAIS Quality Assurance systems aligned to the AIS National Quality Standards Scheme (NQSS).
1.2	Evaluate relevant WAIS high performance equipment and technology to support performance delivery.
1.3	Connect WAIS practitioners with national level quality assurance and continuous improvement initiatives.
1.4	Implement and maintain a schedule of targeted equipment calibration to ensure devices operate according to established standards.
1.5	Effectively communicate quality assurance resources, information and updates to WAIS high performance support stakeholders.
1.6	Develop, manage and maintain strong, effective relationships with key internal and external stakeholders to deliver high quality business outcomes.
<b>2</b>	<b>Teamwork</b>
2.1	Collaborate with performance support staff to ensure high practice standards across each discipline.
<b>3</b>	<b>Quality Assurance Delivery Standards</b>
3.1	Drive and coordinate implementation of quality assurance practices within performance support services.
3.2	Provide expert guidance to the Performance Support Manager and Performance Science Lead regarding quality assurance best practice.
<b>4</b>	<b>Safety and Policy Implementation</b>
4.1	Ensure high-performance environments are safe, policy-compliant, and conducive to athlete well-being.
4.2	Implement and uphold relevant policies and procedures, promoting a culture of safety and responsibility.
<b>5</b>	<b>Continuous Improvement</b>
5.1	Ensure best practice by frequent monitoring and understanding modern quality assurance trends within high performance sport.
<b>6</b>	<b>Other duties</b>
6.1	Other duties as required.

## POSITION KNOWLEDGE, ABILITY AND SKILLS (Competencies)

- Minimum credentials of:
  - Postgraduate tertiary qualifications in Sport Science, Sports Medicine or a related scientific field.
  - ESSA Accredited Sport Scientist [ASpS] Level 1.
  - First Aid and CPR certificate.
- Minimum of three (3) years' experience in a high-performance sporting environment, including:
  - Demonstrated technical expertise in the maintenance, technical operation and related procedures/protocols of sport science equipment and facilities
  - Demonstrated experience in calibrating a range of high-performance sport equipment and an excellent understanding of equipment accuracy and tolerances.
  - Ability to critically evaluate emerging technologies for practical use in impacting a performance environment.
  - Expertise in performance data assessment and reporting, including inter and intra rater reliability assessments.
  - Expertise in developing and implementing testing protocols in consultation with other sports scientists, coaches and athletes.
  - Demonstrated experience developing or working with quality assurance standards
  - Experience in Sport Science testing laboratory or closely related facility is highly desirable.
- Demonstrated ability to develop and maintain strong working relationships with internal and external stakeholders.
- Demonstrated ability to collaborate effectively in high-performance, interdisciplinary teams; prioritizing team goals, solving problems through constructive debate, and applying lessons to enhance future success.
- Proven ability to work and deliver high-performance results under pressure.
- Demonstrated ability to set high-performance standards for self and others, taking responsibility and accountability for tasks.
- Proven skill in engaging others to adopt ideas and commit to actions, including educating others to facilitate behaviour change.
- Above all else, you are a genuine team player that cares about others and always acts with kindness and integrity.
- Please note: This role requires a valid WWCC and will be subject to a National Police Criminal History check prior to appointment

## WORKING WITH CHILDREN

WAIS is committed to protecting children and young people from harm. We require all applicants that will work with children and young people to undergo an extensive screening process prior to appointment. All staff must commit to the WAIS Child Safe Commitment Statement which is:

All children and young people have the right to be and feel safe. In pursuit of their high-performing sporting aspirations, children and young people and their families place their trust in WAIS. WAIS is committed to the safety, wellbeing and empowerment of all children and young people involved in our organization. Everybody at WAIS is responsible for working together to proactively address risks to child safety and continuously improve our child safe culture and practices.

WAIS has 100% commitment to child protection and the physical and psychological safety of children and young people. All allegations, disclosures and concerns will be treated seriously and responded to immediately, consistent with our policies and procedures.

## CITIZENSHIP/VISA

You must be an Australian citizen, have permanent residency status or a visa permitting you to work in Australia. You are required to notify WAIS if your right to work in Australia ceases.

VALUE	INDICATOR
<b>Passion</b> We have a passion for high performance and the desire to demonstrate our commitment of mind and body to WAIS and its purpose.	<ul style="list-style-type: none"> <li>• Has a positive influence on people and the team</li> <li>• Demonstrates high levels of resilience</li> <li>• Value the purpose of high-performance sport</li> <li>• Demonstrates a determination to make a valuable contribution</li> </ul>
<b>Quality</b> We have a personal commitment to provide the highest quality service.	<ul style="list-style-type: none"> <li>• Provides useful and responsive support</li> <li>• Work is reliable and consistently of a high standard</li> <li>• Builds trust and confidence when delivering a service</li> <li>• Anticipates issues and opportunities and is proactive to provide guidance</li> <li>• Pays to attention to detail</li> </ul>
<b>Integrity</b> We follow moral and ethical convictions by doing the right thing in all circumstances.	<ul style="list-style-type: none"> <li>• Treats people with respect, courtesy, and kindness.</li> <li>• Actions are ethical, honest, and truthful</li> <li>• Always maintains consistency of character</li> </ul>
<b>Teamwork</b> We work cooperatively and effectively with others to achieve common goals and participates in building a group identity characterized by pride, trust, and commitment.	<ul style="list-style-type: none"> <li>• Positively participates in the development of team goals</li> <li>• Cooperates with other team members to attain common goals</li> <li>• Contributes to the identification and removal of barriers within the team</li> <li>• Recognizes the contribution of others to achieving team goals</li> </ul>

### Our Diversity Message

We are passionate about helping people lead positive, healthy, and active lives. We embrace diversity of sex, gender identity, gender expression, sexual orientation, intersex status, ability, skill, cultural background, ethnicity, location, religious or political beliefs, life stage, and encourage everyone to apply.

### Our Safety Message

WAIS strives to be a safe environment for all. We actively undertake measures to ensure the safety of children and young people, athletes, and vulnerable people in our physical, digital, and cultural environment. This includes risk assessing our positions to determine which require a Working with Children clearance.

### Employment Policies

The conditions outlined within the WAIS Employment Policies Manual and your individual letter of employment, shall apply at all times.